

Stamperia

ROMANTIC COLLECTION

Romance forever

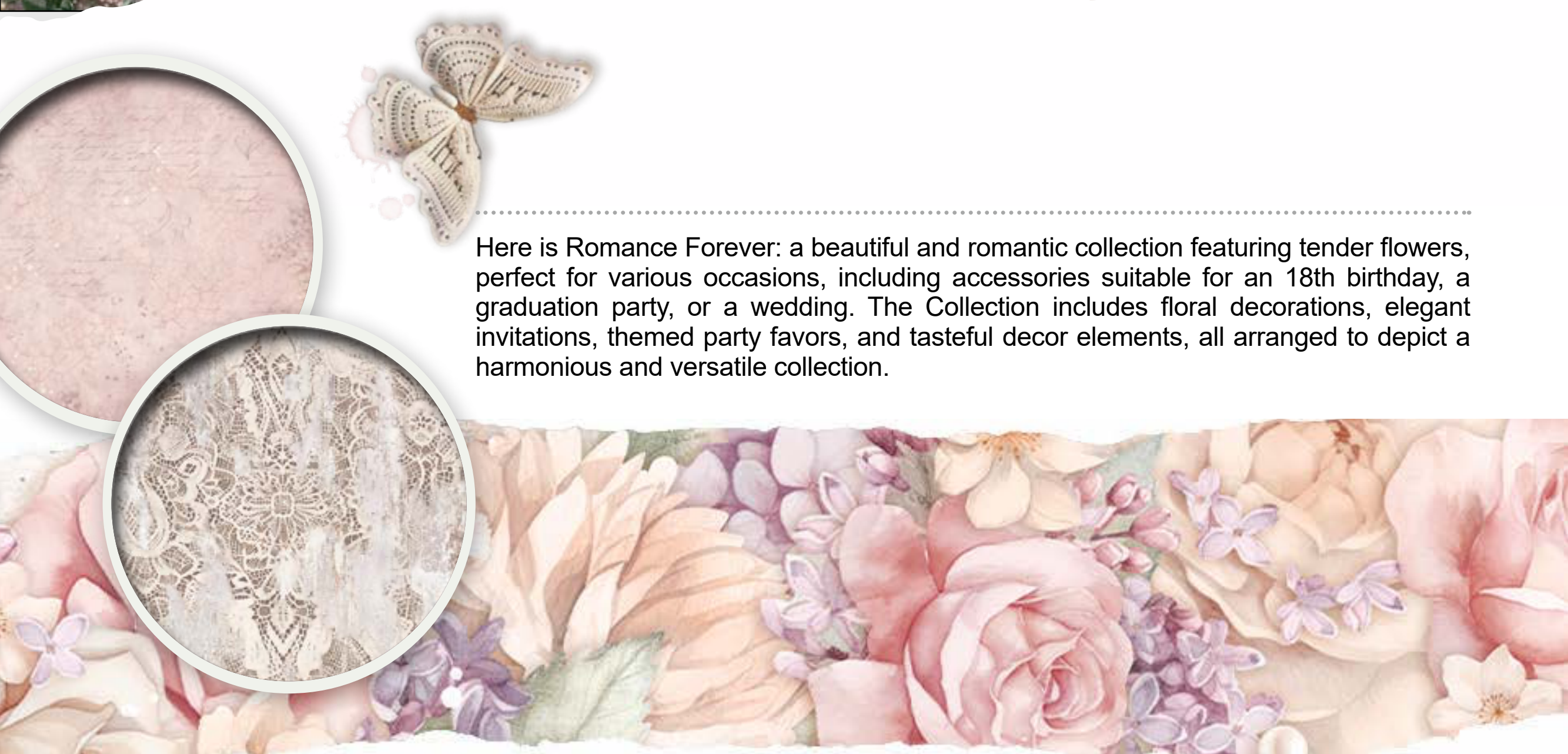
scrapbooking pad

10 DOUBLE FACED SHEETS - 30,5X30,5 CM - 12X12 INCH - 190 gr - ACID FREE



www.stamperia.com

Stämpervä



Here is Romance Forever: a beautiful and romantic collection featuring tender flowers, perfect for various occasions, including accessories suitable for an 18th birthday, a graduation party, or a wedding. The Collection includes floral decorations, elegant invitations, themed party favors, and tasteful decor elements, all arranged to depict a harmonious and versatile collection.

STAMPERS

[link](#)

VIDEO

collection

HAVE A COMPLETE LOOK
ALL THE COLLECTION'S ITEMS



LIVE

streaming

BE THE FIRST TO
DISCOVER ALL THE ITEMS



BUSINESS

[link](#)

B2B

link

VISIT OUR BUSINESS TO
BUSINESS, REGISTER AND BUY



DOWNLOAD

materials

CATALOGS, GRAPHICS, VIDEOS
TO PROMOTE YOUR BUSSINESS



present

Romance forever



Discover our full range of products scrapbooking, journaling, mixed media



SBBL146



SBBS96

SCRAPBOOKING *pad*

SBBL146 BLOCK 10 SHEETS DOUBLE FACE
CM 30.5 X 30.5 - 12"X12" - GR 190

SBBS96 BLOCK 10 SHEETS DOUBLE FACE
CM 20.3 X 20.3 - 8"X 8" - GR 190



LARGE
cm
30 x 30
inches
12x12

SMALL
cm
20.3 x 20.3
inches
8x8

10
SHEETS
double
FACE

ACID
free
sustainable
FOREST



SCRAPBOOKING PAD
inner pages





SCRAPBOOKING LOOSE *sheets*

6 SHEETS DOUBLE FACE
CM 30.5 x 31.5 - 12" x 12.4" - GR 190

SBB971



SBB972



SBB973



SBB974



SBB975



SBB976



RICE PAPER *loose*

4 PRINTED RICE PAPER A4
CM 21 x 29.7 - 8.26" x 11.69" - GR 28

DFSA4831



DFSA4832



DFSA4833



DFSA4834



DFSA4835



DFSA4836

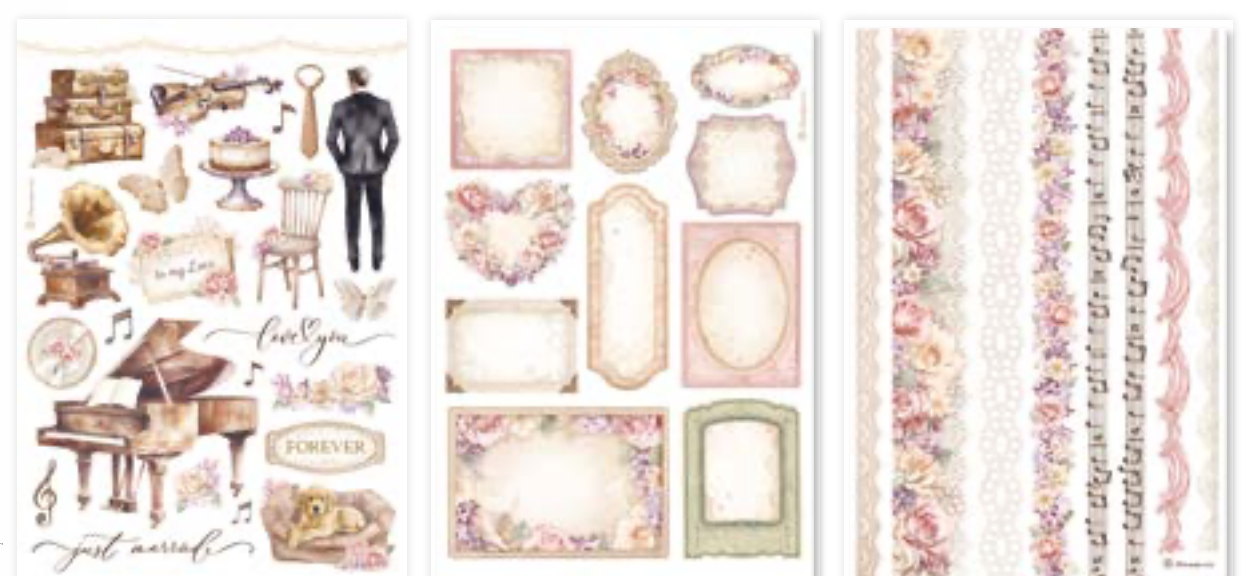


DC29M VELO GLUE 80ML

WASHI *pad*

SBW02 PAD OF 8 ADHESIVE WASH SHEETS CM 14.8 x 21 - 5.8" x 8.3" - ACID FREE

The Romance Forever Washi Pad is specially designed for enriching cards, journals and invitations for any celebrations such as parties, anniversaries, and weddings. The Washi Pad is printed on 8 sheets of translucent washi paper, which is easy to cut.



HOW TO USE

click and watch

CERAMIC CUTTER *pen*

KRT17 IDEAL FOR INTRICATE SHAPES

For washi sheets, scrapbooking paper, cardboard, rub on, patchwork, stencils and many other craft materials. It stays sharp and never rusts. One press of the cutter head can be hidden, more safely. Ceramic cutter is finger friendly.



ONE PRESS OF THE CUTTER HEAD TO HIDE
AND SHOW UP



PRECISION
CUTS





RICE PAPER *selection*

DFS4XRM

6 PRINTED RICE PAPER A4
CM 21 x 29.7 - 8.26" x 11.69" - GR 28

Rice Paper Selection is a selection of 6 assorted subjects that you can use to create a background in your journal page or in your cards. You only need to add a subject, like an Ephemera or a Die Cut, and your creation will be ready.



DC33M RICE PAPER GLUE 50ML



HOW TO USE

click and watch

RICE PAPER *backgrounds*

DFS6014

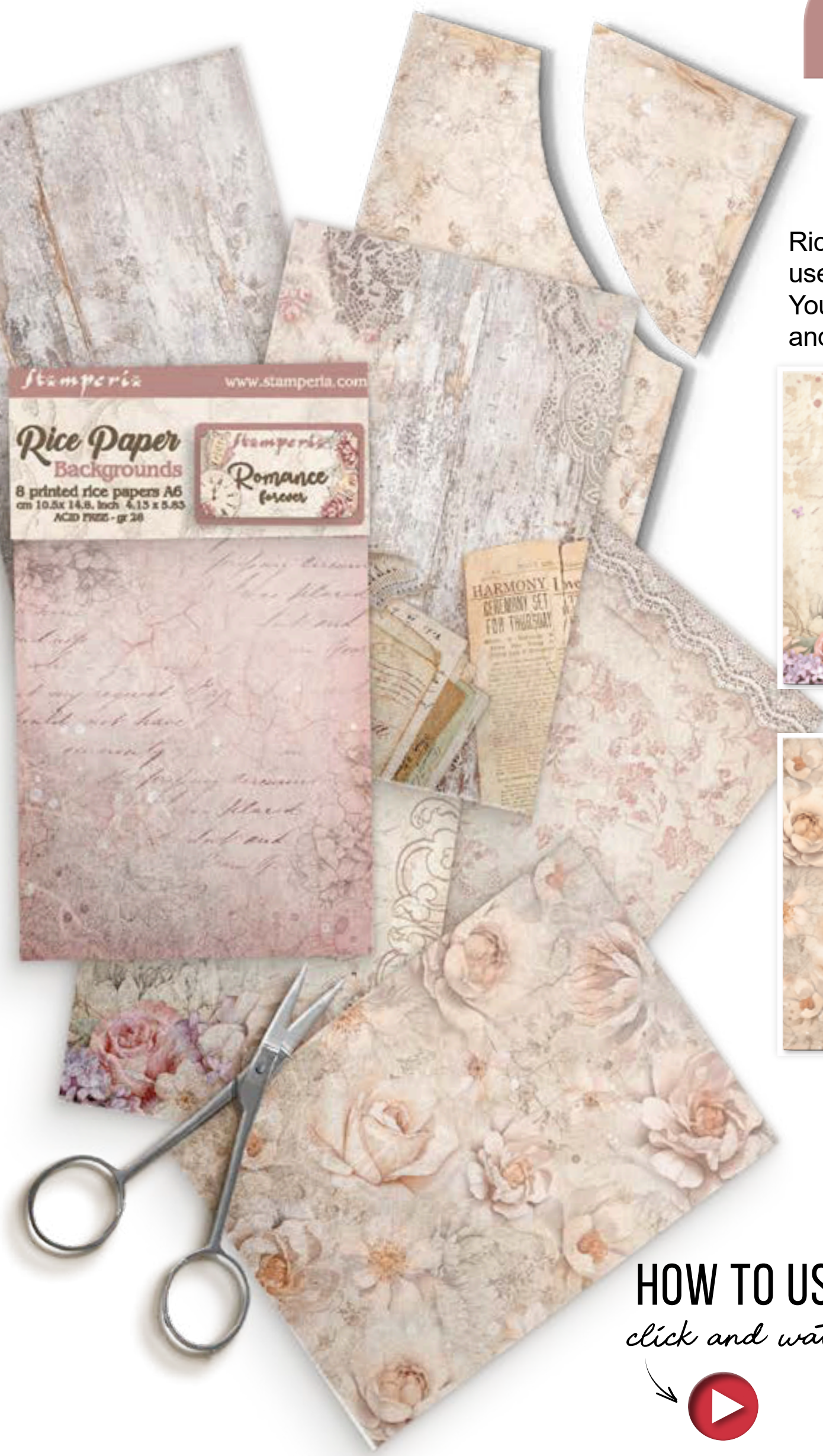
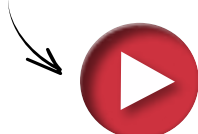
8 PRINTED RICE PAPER A6
CM 10.5 x 14.8 - 4.13" x 5.82" - GR 28

Rice Paper Backgrounds is a selection of subjects that you can use to create background in your journal page or in yourd cards. You only need to add a subject, like an Ephemera or a Die Cut, and your creation will be ready.



HOW TO USE

click and watch





DIE CUTS *laser cut*

PRINTED ON CARDBOARD - GR 800

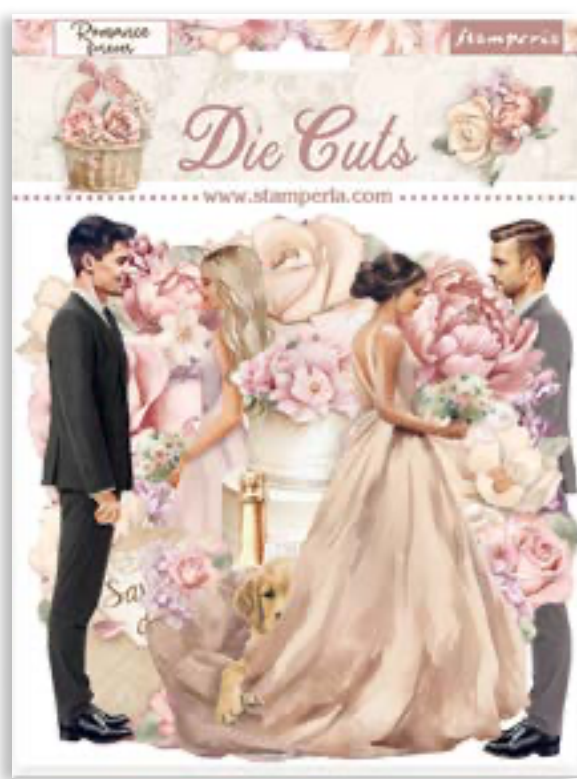
One of the Romance Forever Die cuts is specifically tailored for weddings, while the other features a more general, soft, and floral design.

CERIMONY EDITION



DFLDC89

36 PCS



JOURNALING EDITION



DFLDC90

42 PCS



WOODEN SHAPE *laser cut*

CM 14.8 x 21 - 5.83" x 8.27"

KLSP152





DECORATIVE chips

cm 14 x 14 - 5.51" x 5.51"

Very thin and detailed laser cut embellishments for scrapbooking and card making.

SCB200



SCB201



SCB202



CARDS collection

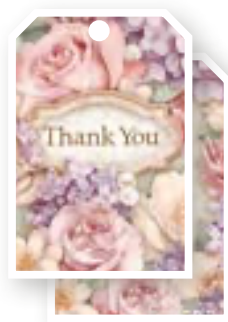
SBCARD24 PRINTED ON 2 SIDES GR 250 - ACID FREE

7 cards - 5 tags - 1 bookmark printed two sides. Each pack contains double printed cards and tags, coordinated with the most popular Scrapbooking Collections.

TAG 6.1x9.2 CM



TAG 6.1x9.2 CM



TAG 6.1x9.2 CM



CARD 11.3x16.2 CM



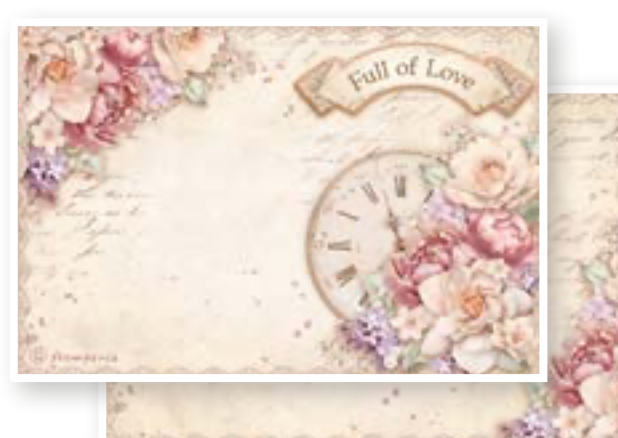
CARD 8.2x11.5 CM



CARD 8.2x11.5 CM



CARD 16.4x11.5 CM



BOOKMARK 5.7x18.5 CM



CARD 13.9x13.9 CM



FOLDED CARD 16.4x11.5 CM



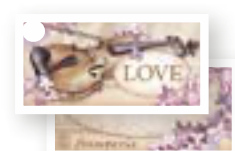
FOLDED CARD 22.6x16.2 CM



TAG 5x5 CM



TAG 3x6 CM





One of the four Rub On of the Romance Forever Collection is tailored for enriching cards, journal and invitations specifically for weddings. The other three feature a more general soft and floral design.

RUB ON

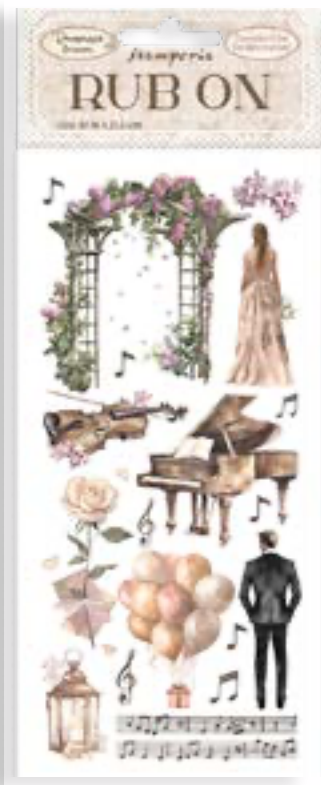
TRANSFER FILM FOR DECORATION
CM 21.16 x 21.6 - 8.33" x 2.36"

With Rub On you can transfer images on any kind of smooth surface, as they were printed on it. Very suitable for journaling and decorations. Best on light colour surfaces.

DFLRB64



DFLRB65



DFLRB66



DFLRB67



EPHEMERA

ADHESIVE PAPER CUT OUTS
CM 12 x 16.5 - 4.72" x 6.49" - GR 300

In the Romance Forever Collection, one Ephemera is specifically designed for weddings and anniversaries, whereas the other showcases a more general romantic and retro style. Suitable for Journaling, Card Making and Scrapbooking

DFLCT37

47 PCS



CERIMONY EDITION

HOW TO PEEL OFF

click and watch



DFLCT38

34 PCS



JOURNALING EDITION





domingo

ENERO

Bienvenido

NEW

SPANISH VERSION

WTK187

WTK188

NEW



NEW



Hola



ENGLISH VERSION

WTK178

WTK179



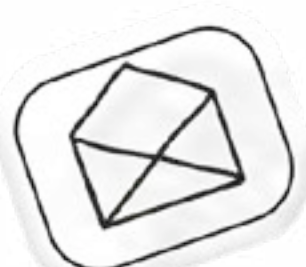
HOW TO USE

click and watch



summer

spring





STENCILS

CM 20 x 25 - 7.87" x 9.84"
THICKNESS MM 0.25

Thick stencil made of resistant, transparent and flexible material. It is advisable to wash them every time after use before the color gets dry

KSTD152



KSTD153



KSTD154



HOW TO USE

click and watch



FABRIC

SBPLT21

CM 30 x 30 - 11.81" x 11.81"

The Fabric can be sewn by hand or by machine. Can also be glued with Craft Glue - DC 31 - and washed by hand in cold water.



smooth effect



HOW TO USE

click and watch

DC31 CRAFT GLUE 80ML

LOVE CANVAS

SBBL146
DFSA4836
KAL58
KAL102
KAL12
DFLDC89
WKPR02
KSTD153
DC31M
K3P15
KE05
K3T13/S
K3PTA4571
K3P43
KAOLVP03

SCRAPBOOKING PAD
RICE PAPER A4
ALLEGRO PASTEL PINK
ALLEGRO TITANIUM WHITE
ALLEGRO IVORY
DIE CUT
DYE INK PAD COFFEE
STENCIL
CRAFT GLUE
CERANTICA
FINISH VARNISH
SPATULA
MOULD A4
GLOSSY GEL
VINTAGE PATINA



ITS ALWAYS YOU CANVAS

SBBL146
DFSA4832
KAL58
KAL102
KAL12
DFLDC90
WKPR02
KSTD153
DC31M
K3P15
KE05
K3T13/S
K3PTA4571
K3P43
KAOLVP03

SCRAPBOOKING PAD
RICE PAPER A4
ALLEGRO PASTEL PINK
ALLEGRO TITANIUM WHITE
ALLEGRO IVORY
DIE CUT
DYE INK PAD COFFEE
STENCIL
CRAFT GLUE
CERANTICA
FINISH VARNISH
SPATULA
MOULD A4
GLOSSY GEL
VINTAGE PATINA



PROJECTS BY *Tarrel Taylor*

FOREVER LOVE



JCH01A6
K3P37
KAQ008
SBW02
KRT12
DFSAK6014
DC33M
SCB202
DFLCT37
KSTD153

MIXED MEDIA ART JOURNAL
CRACKLE PASTE WHITE
AQUACOLOR SPRAY ANCIENT PINK
WASHI PAD
CUTTER PEN
RICE PAPER A6 BACKGROUND
RICE PAPER GLUE
DECORATIVE CHIPS
EPHEMERA
STENCIL



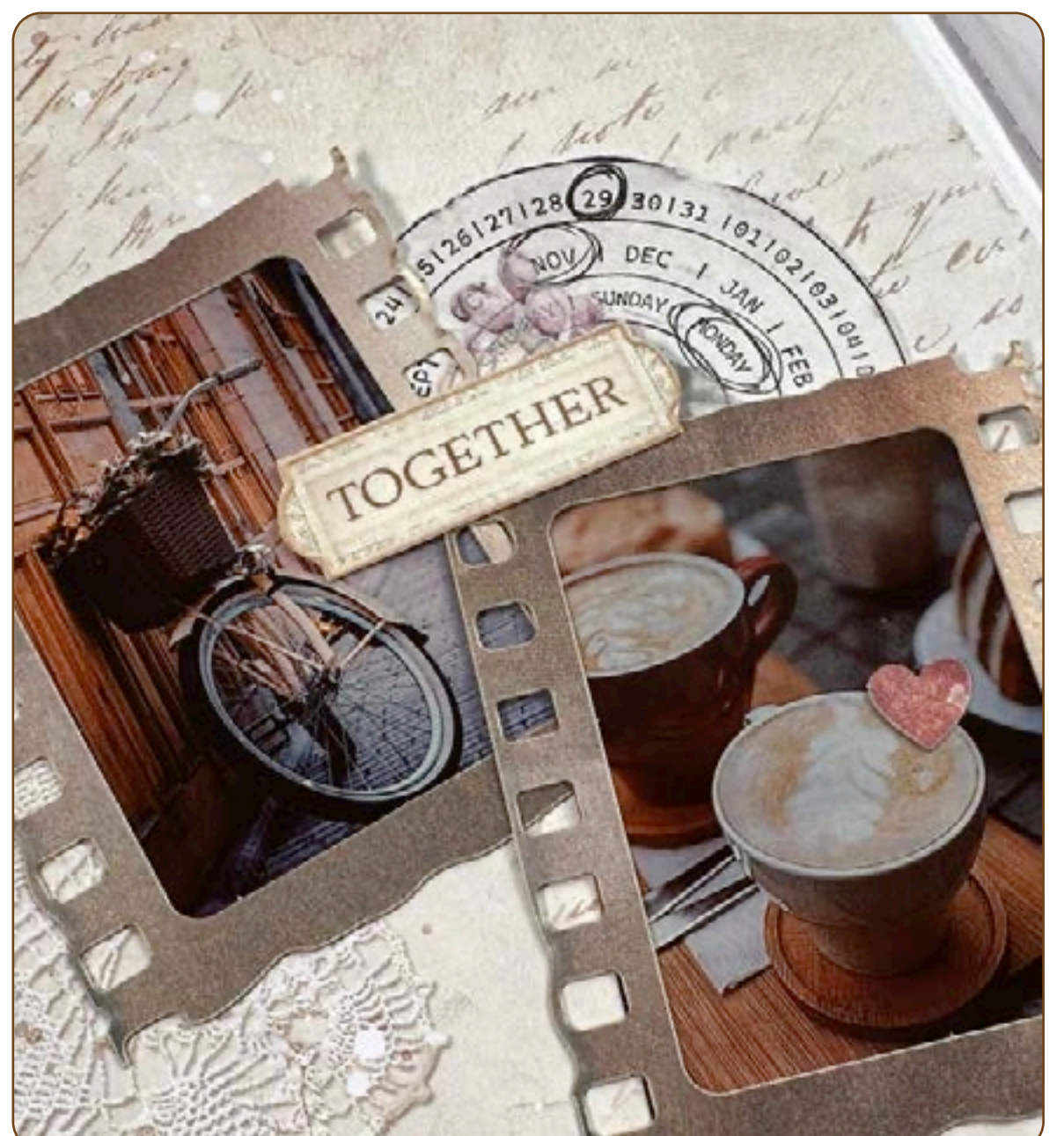
PROJECT BY *Vicky Papaioannou*

CALENDAR STAMPS



JCH01A5
WTK178
WTK179
DFLCT32
DFLCT33
SBBS96
SBW02
DFLCT38
DFLRB65
DFLRB66
DC32M
KRT17

MIXED MEDIA JOURNAL
CLEAR STAMP
CLEAR STAMP
EPHEMERA
EPHEMERA
SCRAPBOOKING PAD SMALL
WASHI PAD
EPHEMERA
RUB ON
RUB ON
MATT GLUE
CERAMIC CUTTER PEN



ALLEGRO KIT

CAN ALLEGRO ACRYLICS ARE HIGHLY COVERING, MATT AND VERY SOFT. IDEAL FOR ANY SURFACES.



KAL17
LILAC

KAL44
POWDER BRUSH

KAL57
ANCIENT PINK

KAL12
IVORY

KAL90
CAPPUCCINO

KAL46
LEAF GREEN

KALKIT44
ML60

AQUACOLOR KIT

FOR ALL SURFACES, INCLUDING PLASTIC AND TEXTILE. VERY RESISTANT, BRILLIANT, TRANSPARENT. SUITABLE FOR BACKGROUNDS AND FOR VINTAGE EFFECTS.



KAQ008
ANCIENT PINK

KAQ019
PEARL WHITE

KAQ021
PEARL GOLD

KAQXRM
ML60

MIXED MEDIA GLUE

UNIVERSAL GLUE - WATER BASED. SUITABLE FOR ALL MATERIALS AND SURFACES.



DC28M
ML 150

ANCIENT WAX

IS A THICK WAX GIVING A METALLIC EFFECT. ONCE IT IS APPLIED IT IS NOT REMOVABLE. CERANTICA IS IDEAL FOR HIGHLIGHTING EMBOSSED ELEMENTS. IT CAN BE SPREAD USING A CLOTH OR A BRUSH. THE TOOLS USED DURING THE WORK SHOULD BE CLEANED WITH SOLVENT.



K3P15L
WHITE ML20

K3P15P
ANCIENT PINK ML20

K3P15S
SILVER ML20

PASTA SCULTURA

WATER-BASED. CONTAINS NATURAL FIBERS TO CREATE A VERY NATURAL VOLUME. IT CAN BE COLORED WITH ACRYLIC AND AQUACOLOR.



K3P52
WHITE ML 150

CREAM PASTE

WATER-BASED. SOFT AND LIGHT, MATT AND FLEXIBLE. APPLY WITH SPATULA.



K3P53
WHITE ML 150

TROWEL SPATULA

METAL SPATULA BIG SIZE CM 9.5. YOU CAN USE TO SPREAD THE PASTES



K3T13/S
BIG SIZE

FINISH VARNISH

TRANSPARENT PROTECTIVE VARNISH GLOSS.



KE04
GLOSS ML80

BLENDING SPONGES

PACK OF THREE FINGER TOOLS.



KRV02

DYE INK PAD

ACID FREE, DRY INSTANTLY, ALCOHOL MARKER FRIENDLY. GREAT FOR STAMPING AND PERFECT FOR INK BLENDING. USE THE INK OVER STENCILS OR BLEND IT OUT TO OBTAIN AN AGING AND ANTIQUING EFFECT. ACTIVATES WITH WATER AND WORKS FOR LIFT COLOR TECHNIQUES.



WKPR09
CREAM

WKPR11
PINK

WKPR17
AQUAMARINE

EMBOSSING POWDER

SPRINKLE EMBOSSING POWDER OVER AN IMAGE THAT YOU HAVE STAMPED USING THE EMBOSS-ING PAD AND TAP OFF THE EXCESS POWDER IN TO THE JAR. HEAT IT WITH AN EM-BOSSING TOOL TO MELT THE POWDER.



WY01
SPARKLING GOL

WY03
SILVER

WY04
SPARKLING SNOW

EMBOSSIND PAD & PENS



WYPAD

WYPP

Complete your collection

MAXI & MINI MOULDS



K3PTA4537



K3PTA4563



K3PTA588



K3PTA5621

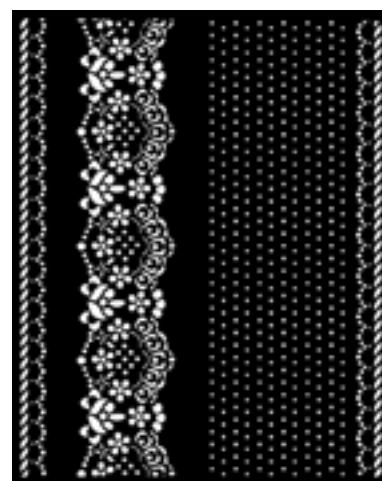


K3PTA5622

STENCILS



KSTD092



KSTD137



KSTDQ17



KSTDQ66

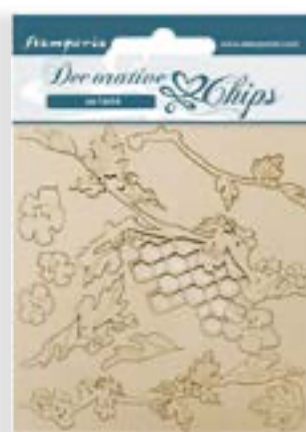


KSTDQ68



KSTDQ78

DECORATIVE CHIPS



SCB19



SCB65



SCB134



SCB135



SCB136



SCB137

STAMPS



WTKCC102



WTKCC117